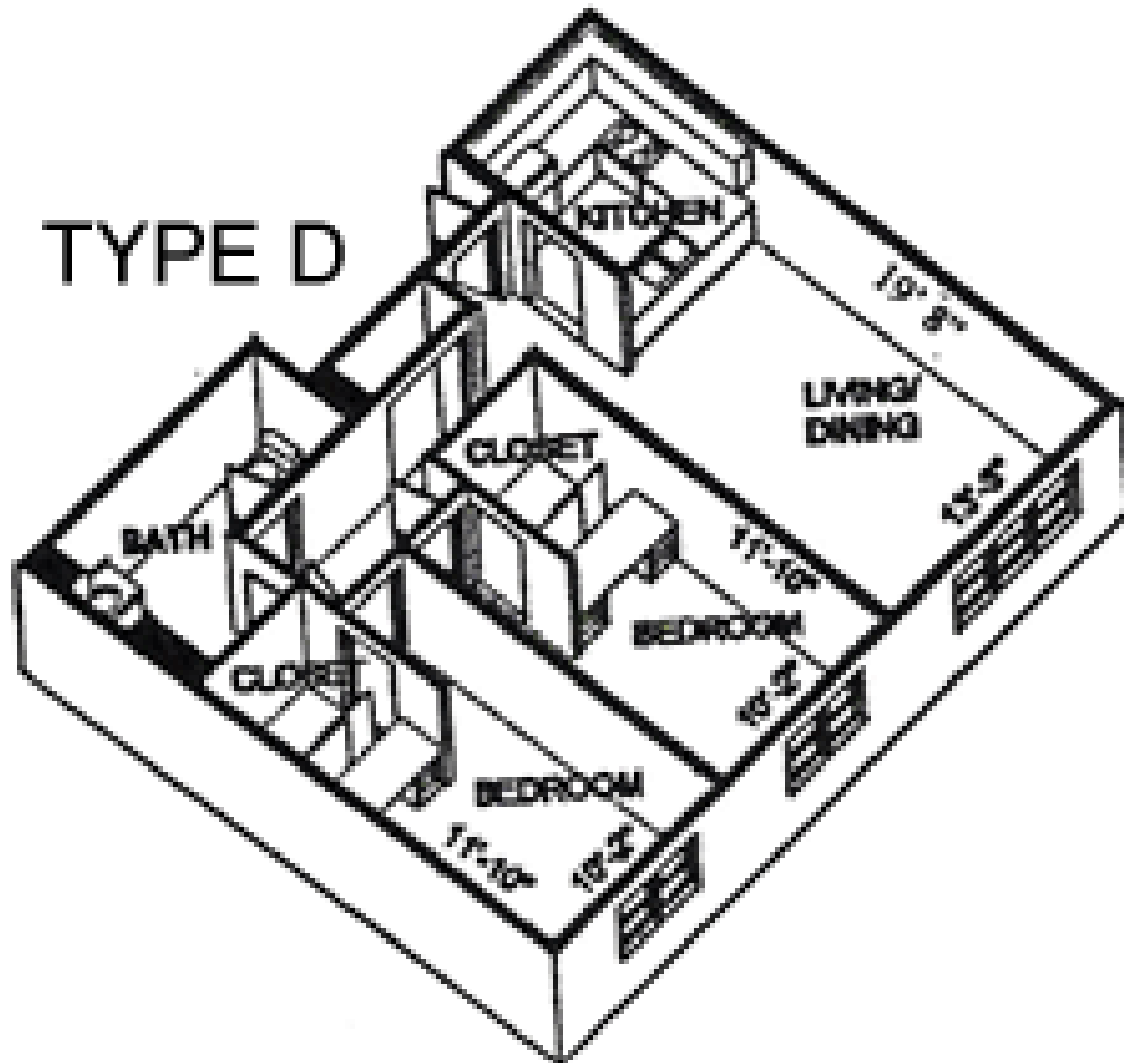




**Casa Roma**  
**111 South Quarry St.**

**Apt. D**  
**2-Bedroom**

957 Sq Ft. and  
966 Sq Ft.



Type D:  
Living/dining area is 19'-8" x 13'-3"  
Each bedroom area is 11'-10" x 10'-2"

**Collegetown Terrace Apartments**

115 South Quarry St.

Ithaca, NY 14850

**607.277.1234** | [www.collegetownterraceithaca.com](http://www.collegetownterraceithaca.com)